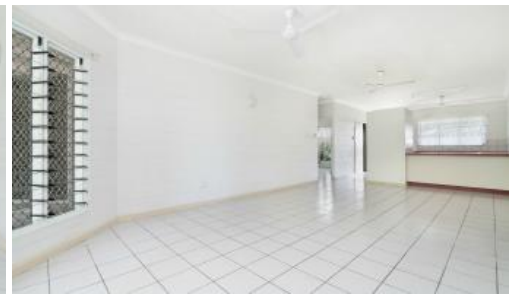




13, 75 Emery Avenue, Gray



BIG YARD WITH TROPICAL GARDENS

This unit is located close to shops, schools and other amenities. The unit is part of a quiet complex and is situated out the back and away from the main road.

It boasts the following features...

- Good size kitchen with ample cupboard space
- Open plan living
- Good sized main bedroom over looking the back garden
- Built in cupboards
- Split system in both bedrooms
- Side access to back of unit
- Tropical style gardens
- Plenty of room for entertaining guests

The above information provided has been furnished to us by the vendor/s. We have not verified whether or not that information is accurate and do not have any belief in one way or the other in its accuracy. We do not accept any responsibility to any person for its accuracy and do no more than pass it on. All interested parties should make and rely upon their own inquiries in order to determine whether or not this information is in fact accurate.

 2  1  2

Price \$270 per week
Property Type Rental
Property ID 1624

AGENT DETAILS

Leah Gelder - 0439 886 991

OFFICE DETAILS

Darwin
74 Cavenagh Street Darwin NT 0800
Australia
08 8943 2432



KG YOUNG & ASSOCIATES PTY LTD
LICENSED REAL ESTATE AGENTS ACN 609 596 712